

1" Pressure Regulator

Series 20415

Features

- ▶ Original Shear-Seal® technology
- ▶ Self adjusting
- ▶ High flow capacity
- ▶ Tolerates contaminated media
- ▶ Fail-safe motor control options
- ▶ Self venting

Applications

- ▶ Coiled tube reels
- ▶ Land-based oil drilling controls
- ▶ BOP control units



General Specifications*

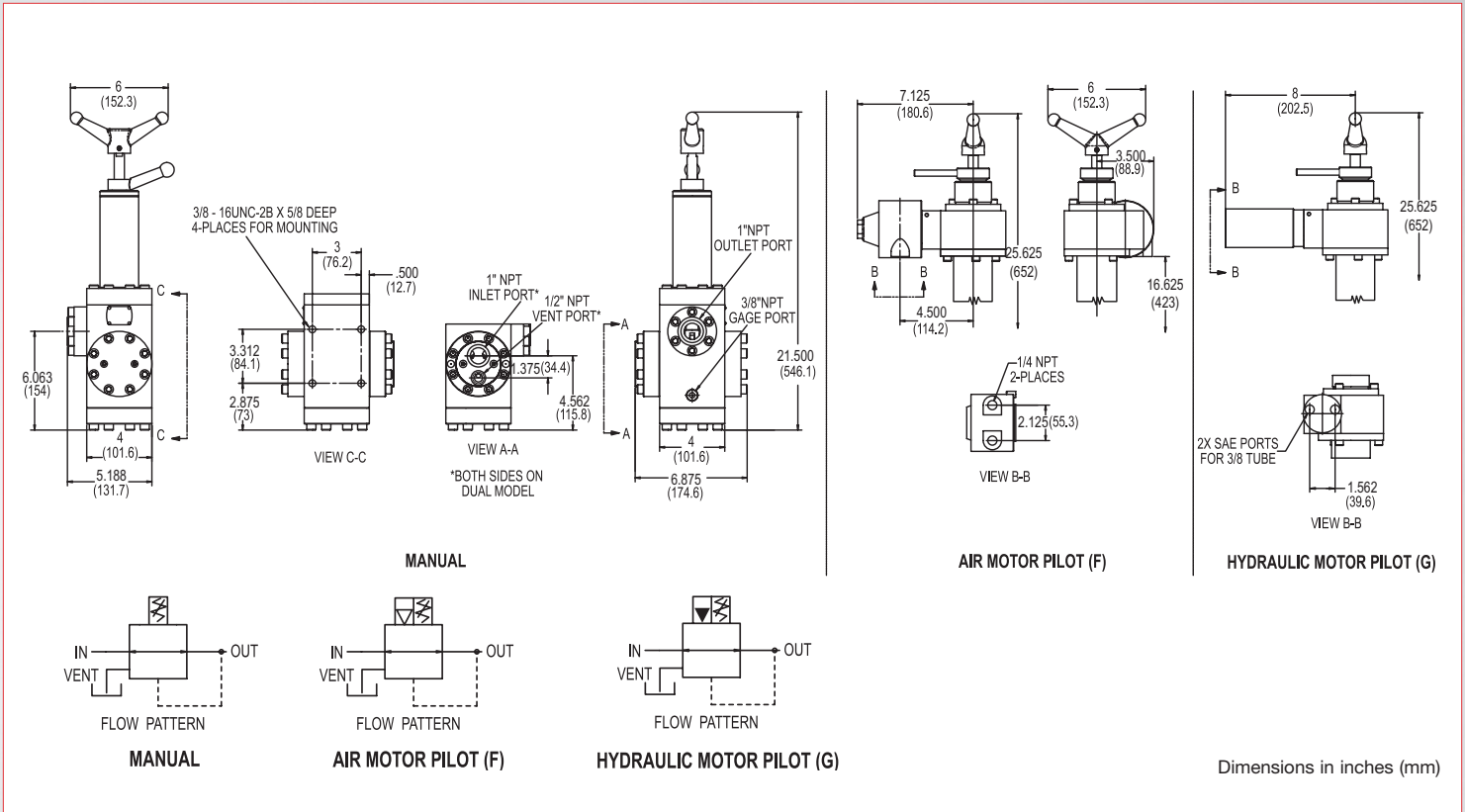
Pressure: Supply/Inlet Pressure: 3,000 psi (207 bar) Regulated Pressure Range: High Sensitivity 500 - 1600 psi (34 - 110 bar) Full Range 500 - 2800 psi (34 - 193 bar) Media: Hydraulic oil or lubricated water Fluid Temperature Range: -30° to +250°F (-40° to +121°C) Proof Pressure: 4,500 psi (310 bar)	Materials of Construction: Body: Stainless steel (std.) Flanges: Phosphate coated alloy steel (std.) Option: Stainless steel Spring Tower: Manual Stainless steel (std.) Pneumatic Motor Model Painted alloy steel (std.) Hydraulic Motor Model Painted alloy steel (std.) Option: Stainless steel Standard O'ring Material: Buna N Socket Head Screws: Zinc plated alloy steel (std.) Option: Stainless steel Wetted Parts: Stainless steel & bronze
Flow: Flow Rate: 70 GPM (@ 50 ft/s) Cv Inlet: 9.8 Cv Vent: 0.6	Pneumatic Pilot Motor ("F" prefix): Pilot Motor Working Pressure: 80 - 120 PSI (5.5 - 8.3 bar) Porting A & B: 1/4" NPT Operating Temperature Range: 32° to +250°F (0° to +120°C)
Porting: Inlet 1: 1" NPT Standard, SAE Optional Outlet (regulated): 1" NPT Standard, SAE Optional Vent: 1/2" NPT Standard, SAE Optional Gauge Port: 3/8" NPT Standard, SAE Optional	Hydraulic Pilot Motor ("G" prefix): Pilot Motor Working Pressure: 400 - 1600 PSI (6.9 - 110 bar) Porting A & B: SAE for 3/8" Tube (Size -6) Operating Temperature Rating: -40° to +250°F (-40° to +121°C)
	Approximate Shipping Weight: Manual: 47 lbs. (21.3 kg) Pneumatic or Hydraulic Motor: 70 lbs. (31.8 kg)

* See product configurator for additional options.

1" Pressure Regulator

Series 20415

Technical Drawings



Product Configurator

Example:

Adjustment Method

Blank	Manual
F	Pneumatic failsafe motor
G	Hydraulic failsafe motor

Option

Blank	NPT porting
-MS	SAE porting
-SS	Stainless steel flanges & trim
-L ¹	Reversed porting

Series

20415S3WQ2	1" Pressure regulator (3/4" full flow regulator)
------------	---

Regulated Pressure Range (Manual & Hydraulic)

Blank	High sensitivity	500 - 1600 psi (34 - 110 bar)
-1	Full range	500 - 2800 psi (34 - 193 bar)

Regulated Pressure Range (Pneumatic motor)

Blank	High sensitivity	500 - 1500 psi (34 - 103 bar)
-1	Full range	500 - 2800 psi (34 - 193 bar)



* Please visit Bertrem Valve's Website to see more valves that address industry needs with uncompromising quality

Note:

- Supply/Vent ports installed on right side of regulated port. Blank flange installed on left side of regulated port.

Barksdale[®]